








# Deep Learning in Thyroid Ultrasonography to Predict Tumor Recurrence in Thyroid Cancers

인공지능 딥러닝을 이용한 갑상선 초음파에서의  
갑상선암의 재발 예측

Jieun Kil, MD<sup>1</sup> , Kwang Gi Kim, PhD<sup>2†</sup> , Young Jae Kim, PhD<sup>2</sup> ,  
Hye Ryoung Koo, MD<sup>1</sup> , Jeong Seon Park, MD<sup>1\*†</sup> 

<sup>1</sup>Department of Radiology, Hanyang University College of Medicine, Seoul, Korea

<sup>2</sup>Department of Biomedical Engineering, College of Medicine, Gachon University, Incheon, Korea

**Purpose** To evaluate a deep learning model to predict recurrence of thyroid tumor using preoperative ultrasonography (US).

**Materials and Methods** We included representative images from 229 US-based patients (male:female = 42:187; mean age, 49.6 years) who had been diagnosed with thyroid cancer on preoperative US and subsequently underwent thyroid surgery. After selecting each representative transverse or longitudinal US image, we created a data set from the resulting database of 898 images after augmentation. The Python 2.7.6 and Keras 2.1.5 framework for neural networks were used for deep learning with a convolutional neural network. We compared the clinical and histological features between patients with and without recurrence. The predictive performance of the deep learning model between groups was evaluated using receiver operating characteristic (ROC) analysis, and the area under the ROC curve served as a summary of the prognostic performance of the deep learning model to predict recurrent thyroid cancer.

**Results** Tumor recurrence was noted in 49 (21.4%) among the 229 patients. Tumor size and multifocality varied significantly between the groups with and without recurrence ( $p < 0.05$ ). The overall mean area under the curve (AUC) value of the deep learning model for prediction of recurrent thyroid cancer was  $0.9 \pm 0.06$ . The mean AUC value was  $0.87 \pm 0.03$  in macrocarcinoma and  $0.79 \pm 0.16$  in microcarcinoma.

**Conclusion** A deep learning model for analysis of US images of thyroid cancer showed the possibility of predicting recurrence of thyroid cancer.

**Index terms** Deep Learning; Thyroid Cancer, Papillary; Ultrasonography; Recurrence

Received August 6, 2019  
 Revised September 24, 2019  
 Accepted October 8, 2019

\*Corresponding author

Jeong Seon Park, MD  
 Department of Radiology,  
 Hanyang University  
 College of Medicine,  
 222 Wangsimni-ro, Seongdong-gu,  
 Seoul 04763, Korea.

Tel 82-2-2290-9164

Fax 82-2-2293-2111

E-mail jsp@hanyang.ac.kr

This is an Open Access article distributed under the terms of the Creative Commons Attribution Non-Commercial License (<https://creativecommons.org/licenses/by-nc/4.0/>) which permits unrestricted non-commercial use, distribution, and reproduction in any medium, provided the original work is properly cited.

## ORCID iDs

Jieun Kil 


[https://](https://orcid.org/0000-0003-4170-5720)

[orcid.org/0000-0003-4170-5720](https://orcid.org/0000-0003-4170-5720)

Kwang Gi Kim 


[https://](https://orcid.org/0000-0001-9714-6038)

[orcid.org/0000-0001-9714-6038](https://orcid.org/0000-0001-9714-6038)

Young Jae Kim 


[https://](https://orcid.org/0000-0003-0443-0051)

[orcid.org/0000-0003-0443-0051](https://orcid.org/0000-0003-0443-0051)

Hye Ryoung Koo 

[https://](https://orcid.org/0000-0002-7562-2256)

[orcid.org/0000-0002-7562-2256](https://orcid.org/0000-0002-7562-2256)

Jeong Seon Park 

[https://](https://orcid.org/0000-0002-5550-6645)

[orcid.org/0000-0002-5550-6645](https://orcid.org/0000-0002-5550-6645)

† These authors contributed equally to this work.

## INTRODUCTION

Thyroid cancer is the most common endocrine malignancy worldwide (1-3). Papillary thyroid carcinoma (PTC) is the most common (70–95%) histologic type and accounts for most new cases (4-6).

Advances in technology have yielded high-frequency ultrasonic transducers and improved spatial resolution, and ultrasonography (US) is the preferred imaging method for thyroid disease screening. The incidence of papillary thyroid microcarcinoma (PTMC) is rapidly increasing due largely to improved ultrasonographic detection of small nodules not detected by clinical palpation (7-9). Thyroid microcarcinomas, which are almost exclusively PTC, are defined as thyroid cancers measuring  $\leq 1$  cm in maximum dimension (10). PTMC was introduced as a subtype of papillary thyroid cancer by the World Health Organization in 2004 and accounts for 30% to 40% of all papillary thyroid cancers (11).

Although the prognosis of differentiated thyroid cancer (DTC) is excellent, cervical lymph node metastasis is found pathologically in 30–80% of patients with PTC (3, 12-15), and the overall tumor recurrence rate varies from 7.7% to 36% (3, 15). Poor prognostic factors in thyroid carcinoma include large tumors, tumors that extend beyond the thyroid capsule, male sex, and lymph-node metastases (16-18). Several studies have revealed that the location, tumor size, degree of thyroid capsule abutment, multiplicity, or microcalcifications may be predictive of lateral lymph node metastasis in patients with PTC (19-21).

Recently, a deep learning model has been used as a tool for medical image analysis with promising results in various applications such as computerized prognosis for Alzheimer's disease, organ segmentation, and detection of diseases (22-24). A few studies have investigated the utility of gray-scale US characteristics and a deep learning model in predicting prognosis of PTC (25-28). However, there are no published data regarding prognostic US features using a deep learning model in patients with thyroid cancer. Therefore, we evaluated a deep learning model to predict recurrence of thyroid cancer on preoperative US images.

## MATERIALS AND METHODS

### PATIENTS

This study was approved by our Institutional Review Board, and informed consent was waived (IRB No. 2010-03-031-001). Two radiologists consecutively reviewed the preoperative US images of patients diagnosed with thyroid cancer and underwent surgery between 2006 and 2011. We included 229 patients, 42 males and 187 females (median age, 49.6 years; range, 19–83 years). These patients underwent either total thyroidectomy ( $n = 173$ ) or hemithyroidectomy ( $n = 56$ ). The mean follow-up period was 7.1 years and ranged from 3.2–13.7 years. The clinical and histological features of age, sex, recurrence site, tumor size, histologic type, multifocality and lymph node metastasis were evaluated in each group. According to our institutional protocol, postoperative surveillance for the thyroid cancer patients consisted of annual neck US, clinical physical examination, the measurement of serum thyroid-stimulating hormone, free thyroxine, thyroglobulin (Tg), and chest X-ray. Additionally, computed tomography examinations were performed in the patients with suspicious lateral neck lymph node or lung

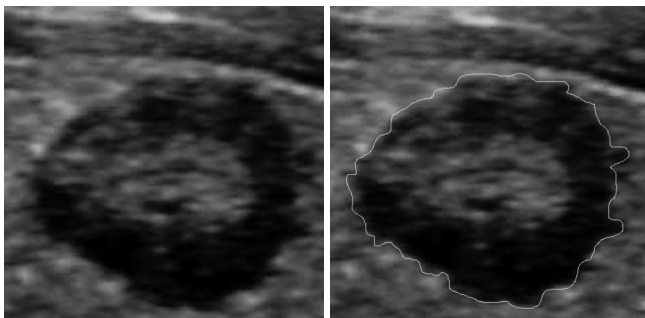
metastasis.

## ULTRASONOGRAPHIC IMAGES

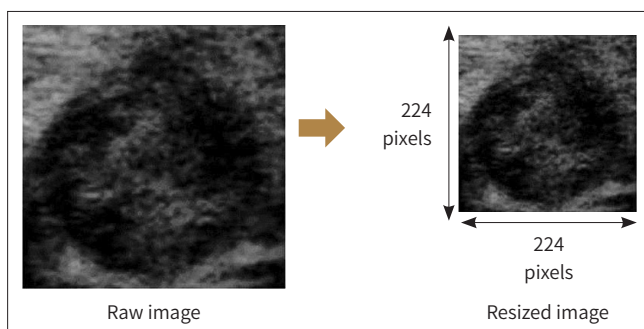
Preoperative US was performed prospectively by one of two radiologists (four and nine years of experience, respectively) dedicated to thyroid imaging interpretation. US examinations were performed using a 5–12 MHz transducer (Philips Medical Systems, Bothell, WA, USA). Each representative transverse or longitudinal US image was selected by consensus of the two radiologists. We used the Image J program (National Institute of Mental Health, Bethesda, MD, USA) to draw a region of interest manually on the US images to outline the thyroid cancer (Fig. 1). All raw images were cropped into squares with long axis along the side of the image, which reduce the image distortion caused by resizing process. Finally, cropped images were resized to a  $224 \times 224$  pixel (Fig. 2).

## DEEP LEARNING ANALYSIS

Image augmentation protocol was performed as an analysis method in deep learning to overcome the lack of statistical power due to a small number of samples. Using image augmentation, initial images were expanded by image transformation such as rotation, translation, scale up, and horizontal flip. An augmented data set with 898 images was used for image analysis. We used 717 of 898 images for training and 181 images for test data and all data divided per patient basis. Each training/validation split constituted an approximate 80:20 split of the 898 images, retaining the underlying distribution of disease prevalence. In same patient, the mean augmented US images were 3.96 images per person in the train set, 3.77 images in the test set, and 3.92 images in the whole data set. All augmented US images of same patients are separately used between train and test set. The learning algorithm generated from the train set of this study was evaluated in a test set consisting of completely independent patient data set.



**Fig. 1.** The process of manually drawing a region of interest on a representative ultrasonography image of thyroid cancer using the Image J program. The bright line in the image on the right represents the tumor margin.



**Fig. 2.** A schematic diagram of the process of cropping and resizing an ultrasonography image of a patient with thyroid cancer.

The breakdown of training and validation data sets according to tumor size is listed in the Table 1. The images were resized to a  $224 \times 224$  pixel with a Bi-Cubic interpolation algorithm.

We built the system with an NVIDIA TITAN Xp (NVIDIA, Santa Clara, CA, USA) graphics processing unit, a Xeon E5-1650 v4 (Intel, Santa Clara, CA, USA) central processing unit, and 128 GB of random access memory. The Python 2.7.6 and Keras 2.1.5 (with the TensorFlow backend) frameworks for neural networks were used for deep learning with a convolutional neural network. The proposed model for thyroid classification was transferred from the pre-trained on 1.2 million everyday color images from ImageNet (<http://www.image-net.org/>) that consisted of 1000 categories.

A total of 434 training data was then fine-tuned under the conditions of 16 batch size, 150 epoch, and 0.0001 learning rate using the ResNet-50 model (29). The ResNet-50 model has improved performance in terms of training and generalization errors by utilizing shortcut connections to significantly reduce the difficulty of deep training (30).

## STATISTICAL ANALYSIS

We used the moonBook package within the R statistical language for comparison of demographic characteristics between the no recurrence and recurrence groups (31, 32). We also compared demographic information between train and test set. All statistical analysis were performed based on per-patient data. Values for predicting recurrent thyroid cancer were calculated as the area under the curve (AUC), and the US images were used as input data for the deep learning approach. The predictive performance of the deep learning model between the no recurrence and recurrence groups was evaluated using receiver operating characteristic (ROC) analysis, and the area under the ROC curve served as a summary of the prognostic performance of the model in recurrent thyroid cancer. We also performed ROC analysis in subgroups of thyroid carcinoma larger than 1 cm in greatest diameter (macrocarcinoma) and 1 cm or less (microcarcinoma). In this experiment, 181 US images of pathologically diagnosed thyroid cancer were sampled with k-fold cross-validation ( $k = 3$ ) for performance of a deep learning program predicting thyroid cancer recurrence with ROC curves. We also compared the AUC values of the validation steps between macrocarcinoma and microcarcinoma. All reported  $p$ -values were two-sided, and  $p < 0.05$  was considered statistically significant. We used t-distributed stochastic neighbor-embedding (tSNE) method to visualize the predictive performance of the deep learning model.

## RESULTS

We first compared the clinical characteristics between train and test set. There was no sig-

**Table 1.** Breakdown of Training and Validation Data Sets According to Tumor Size

Thyroid Cancer	No. of Samples			
	Training Set		Validation Set	
	No Recurrence	Recurrence	No Recurrence	Recurrence
Microcarcinoma	259	24	65	6
Macrocarcinoma	380	54	96	14

nificant difference in sex, age, cancer size, histologic type, and lymph node metastasis between train set and test set (Table 2). It was only statistically significant at  $p < 0.022$  in multifocality.

The demographic characteristics of the no recurrence and recurrence groups are listed in

**Table 2.** Comparison of Demographic Characteristics of the Train Set and Test Set

Clinical Variable	Subgroup	Train Set (n = 181, %)	Test Set (n = 48, %)	p-Value
Age		50.1 ± 11.7	49.2 ± 13.1	0.612
Sex	Male	151 (83.7)	39 (82.0)	0.880
	Female	30 (16.3)	9 (18.0)	
Tumor size (cm)	Median diameter [IQR]	0.6 [0.4–1.2]	0.6 [0.5–1.2]	0.647
	Macrocarcinoma	113 (62.5)	30 (61.7)	0.376
	Microcarcinoma	68 (37.5)	18 (38.3)	
Histologic type	PTC	176 (97.1)	47 (98.4)	0.149
	FC	3 (1.9)	0 (0.0)	
	MC	0 (0.0)	1 (1.6)	
	Other	2 (1.0)	0 (0.0)	
Multifocality	No	120 (66.3)	39 (80.5)	0.022
	Yes	61 (33.7)	9 (19.5)	
Lymph node metastasis	Yes	172 (95.2)	45 (92.2)	0.127
	No	9 (4.8)	4 (7.8)	

The results for categorical variables are presented as percentages in parentheses for the three genotypic groups. The Shapiro-Wilk test is used to assess the normality of the continuous variables. The continuous variables are non-normally distributed and are described as median and IQR in brackets. Differences between the groups are assessed using Fisher's exact test for categorical variables and the Kruskal-Wallis rank sum test for interval scale measurements. A  $p$ -value  $< 0.05$  is considered statistically significant.

FC = follicular carcinoma, IQR = interquartile range, MC = medullary carcinoma, PTC = papillary thyroid carcinoma

**Table 3.** Comparison of Demographic Characteristics of the No Recurrence and Recurrence Groups

Clinical Variable	Subgroup	No Recurrence (n = 180, %)	Recurrence (n = 49, %)	p-Value
Age		50.4 ± 12.2	46.9 ± 13.7	0.086
Sex	Male	152 (84.4)	35 (71.4)	0.060
	Female	28 (15.6)	14 (28.6)	
Tumor size (cm)	Median diameter [IQR]	0.6 [0.4–1.0]	1.4 [0.7–2.5]	< 0.001
	Macrocarcinoma	138 (76.7)	20 (40.8)	< 0.001
	Microcarcinoma	42 (23.3)	29 (59.2)	
Histologic type	PTC	177 (98.3)	47 (95.9)	0.157
	FC	1 (0.6)	1 (2.0)	
	MC	2 (1.1)	0 (0.0)	
	Other	0 (0.0)	1 (2.0)	
Multifocality	No	145 (80.6)	29 (59.2)	0.001
	Yes	35 (19.4)	20 (40.8)	
Lymph node metastasis	Yes	175 (97.2)	17 (34.7)	< 0.001
	No	5 (2.8)	32 (65.3)	

The results for categorical variables are presented as percentages in parentheses for the three genotypic groups. The Shapiro-Wilk test is used to assess the normality of the continuous variables. The continuous variables are non-normally distributed and are described as median and IQR in brackets. Differences between the groups are assessed using Fisher's exact test for categorical variables and the Kruskal-Wallis rank sum test for interval scale measurements. A  $p$ -value  $< 0.05$  is considered statistically significant.

FC = follicular carcinoma, IQR = interquartile range, MC = medullary carcinoma, PTC = papillary thyroid carcinoma

the Table 3. Among a total of 229 patients, 180 patients (78.6%) had no recurrent tumors (no recurrence group), while 49 patients had tumor recurrence (21.4%) (recurrence group). The recurrence rate was higher for macrocarcinoma (40.8%) than microcarcinoma (12.7%). Recurrence sites comprised regional lymph nodes ( $n = 34$ , 69.4%), lung ( $n = 4$ , 8.2%), bone ( $n = 2$ , 4.1%), and others ( $n = 9$ , 18.4%). In the patients with tumor recurrence, the median time of recurrence was 42.9 months  $\pm$  30.4 (median 35.7 months; range 5.3–110.9 months) after initial surgery. At the time of recurrence, the mean of serum Tg level was 140.5  $\pm$  734 ng/mL. Among 34 patients with regional lymph node recurrence, 8 patients were presenting as a palpable neck mass in physical examination and 48 patients were detected in US.

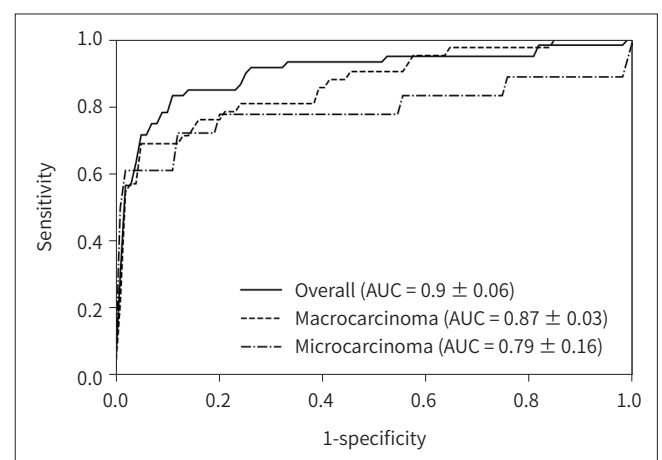
Tumor size and multifocality were significantly different between the no recurrence and recurrence groups ( $p < 0.05$ ).

Fig. 3 displays ROC curves for predicting tumor recurrence using a deep learning model in thyroid cancers using three-fold cross-validation. The overall mean AUC value of the deep learning model for predicting recurrent thyroid cancer was 0.9  $\pm$  0.06. The mean AUC value was 0.87  $\pm$  0.03 in macrocarcinoma and 0.79  $\pm$  0.16 in microcarcinoma (Table 4). There were no statistically significant differences between k-fold cross validation of AUC values ( $p > 0.05$ ). The Sensitivity, specificity and accuracy of the deep learning program predicting thyroid cancer recurrence are listed in the Table 5.

The intraclass features were divided into two groups on a 2-dimensional (2D) diagram of tumor recurrence using the tSNE technique, which revealed patterns distinguishing them in each group (Fig. 4).

## DISCUSSION

DTC has an excellent prognosis; however, there is considerable local recurrence and distant metastasis in long-term follow-up. As microcarcinomas are comprising an increasing proportion of thyroid cancers, a series of observational trials has shown that most PTMC can be observed with active surveillance (33-35). In the era of active surveillance with DTC or PTMC, studies exploring methods for preoperative prediction of thyroid cancer prognosis have been emerging.



**Fig. 3.** Receiver operating characteristic curves for prediction of thyroid cancer recurrence. AUC = area under the curve

According to previous studies, tumor size, multiplicity, and extrathyroidal tumor extension or lymph node metastases are poor prognostic factors and patients with these risk factors for recurrence have a nearly seven-fold higher mortality rate (3, 15-18, 36). Our results also showed that thyroid cancers that were larger and multifocal had a significantly higher rate of recurrence ( $p < 0.05$ ).

Several studies have evaluated poor prognostic factors for thyroid cancer using thyroid US

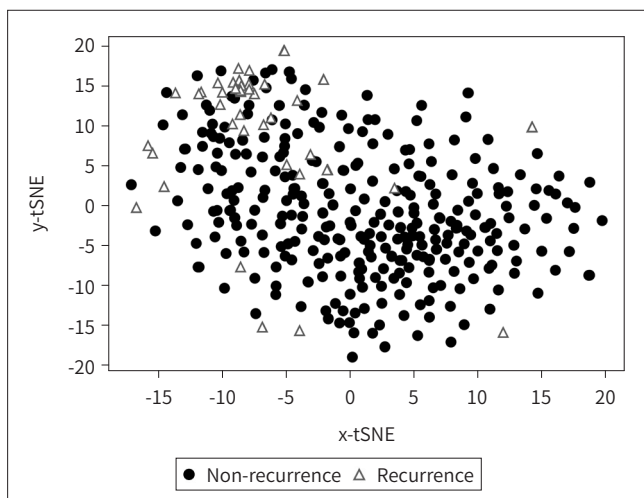
**Table 4.** Three-Fold Cross-Validation of Performance of the Deep Learning Program Predicting Thyroid Cancer Recurrence with AUC

Group (No. of Samples)	Actual Group	Prediction	3-Fold Cross Validation				
			1st	2nd	3rd	Accuracy	AUC
						Mean	Mean
Macrocarcinoma (n=110)	No recurrence group (n = 96)	True	94	91	95	0.92	0.87
		False	2	5	1		
	Recurrence group (n = 14)	True	11	9	5		
		False	3	5	9		
Microcarcinoma (n = 71)	No recurrence group (n = 65)	True	65	65	65	0.87	0.79
		False	0	0	0		
	Recurrence group (n = 6)	True	2	2	1		
		False	4	4	5		
Overall (n = 181)	No recurrence group (n = 161)	True	155	159	160	0.93	0.90
		False	6	2	1		
	Recurrence group (n = 20)	True	13	8	9		
		False	7	12	11		

AUC = area under the curve

**Table 5.** The Sensitivity, Specificity, and Accuracy of the Deep Learning Program Predicting Thyroid Cancer Recurrence

	Sensitivity (%)	Specificity (%)	Accuracy (%)
Macrocarcinoma	59.5	97.2	92.4
Microcarcinoma	27.8	100	93.9
Overall	50.0	97.9	90.0



**Fig. 4.** 2D visualization of the presence of tumor recurrence generated using the tSNE technique in thyroid cancer between recurrence (open triangles) and no recurrence (close circles) groups. tSNE = t-distributed stochastic neighbor-embedding



image analysis, and several US features have been reported as poor prognostic factors, including upper location, presence of calcifications, or features suggestive of malignant thyroid nodules (20, 37). Recently, various computer-aided analyses of thyroid US images have been used in the detection and differential diagnosis of malignant thyroid nodules, and they showed excellent diagnostic performance with accuracy over 70% or high AUC values over 0.9 (25, 38, 39). Kim et al. (40) investigated texture analysis of thyroid US in patients with PTMC; however, there was no correlation between prognosis and lymph node metastasis. In our deep learning model for predicting tumor recurrence, the overall AUC value was 0.90 and was slightly higher in macrocarcinoma ( $0.87 \pm 0.03$ ) than microcarcinoma ( $0.79 \pm 0.16$ ). In our data, recurrence of microcarcinoma was less frequent than that of macrocarcinoma ( $p < 0.001$ ), and the difference in incidence and prevalence of recurrence according to tumor size may have affected model performance.

In our data, we made a deep learning model to predict thyroid cancer recurrence, and the sensitivity was low (50%) and the specificity was high (97.9%). With these results, this model can provide a parameter to subdivide low-risk group in thyroid cancer patients at the time of preoperative US. In the era of active surveillance for the thyroid cancer patients, further investigations including multivariate analysis with deep learning algorithm and many clinical parameters could suggest a better predictive model.

This study has several limitations. First, it was retrospective and performed using data from a single institution; thus, it may be subject to bias. Second, the included US data were obtained using one machine and may not be representative of results from other machines. Third, one representative transverse or longitudinal US image was selected among many slices. Using 3D volumetric data including the whole tumor would be optimal considering the heterogeneity of cancer. The last limitation is the possibility of overfitting in this deep learning algorithm using relatively small volume of data. To prevent the overfitting in deep learning, we designed to collect US images with a variety of size of thyroid cancer. We also analyzed the cropped images without the area of normal thyroid tissue to reduce the number of potential data features that lead to ruin the model. A larger sample size of patients with recurrent thyroid cancer or multicenter trial may overcome such as overfitting of results.

In conclusion, a deep learning model for analysis of US images showed the possibility of a feasible algorithm to predict thyroid cancer recurrence.

#### Author Contributions

Conceptualization, P.J.S., K.K.G.; data curation, P.J.S., K.J., K.H.R.; formal analysis, K.J., K.H.R.; investigation, all authors; methodology, P.J.S., K.K.G.; project administration, P.J.S., K.K.G.; resources, P.J.S., K.J., K.H.R.; software, P.J.S., K.J., K.H.R.; supervision, P.J.S., K.K.G.; validation, P.J.S., K.Y.J., K.K.G.; visualization, P.J.S., K.Y.J., K.K.G.; writing—original draft, P.J.S., K.Y.J., K.J.; and writing—review & editing, P.J.S., K.K.G.

#### Conflicts of Interest

The authors have no potential conflicts of interest to disclose.

#### Acknowledgments

This work was supported by the research fund of Hanyang University (HY-2016). This research supported by the Gachon Univ. funding (2017-0211). Jeong Seon Park and Kwang Gi Kim are equally contributed.



## REFERENCES

1. Ito Y, Kihara M, Takamura Y, Kobayashi K, Miya A, Hirokawa M, et al. Prognosis and prognostic factors of papillary thyroid carcinoma in patients under 20 years. *Endocr J* 2012;59:539-545
2. Siegel R, Ma J, Zou Z, Jemal A. Cancer statistics, 2014. *CA Cancer J Clin* 2014;64:9-29
3. Lim H, Devesa SS, Sosa JA, Check D, Kitahara CM. Trends in thyroid cancer incidence and mortality in the United States, 1974-2013. *JAMA* 2017;317:1338-1348
4. Stewart B, Wild CP. World Cancer Report 2014. Available at: <http://publichealthwell.ie/node/725845>. Published 2014. Accessed Nov 19, 2019
5. Baek SK, Jung KY, Kang SM, Kwon SY, Woo JS, Cho SH, et al. Clinical risk factors associated with cervical lymph node recurrence in papillary thyroid carcinoma. *Thyroid* 2010;20:147-152
6. Conzo G, Docimo G, Ruggiero R, Napolitano S, Palazzo A, Gambardella C, et al. Surgical treatment of papillary thyroid carcinoma without lymph nodal involvement. *G Chir* 2012;33:339-342
7. Cramer JD, Fu P, Harth KC, Margevicius S, Wilhelm SM. Analysis of the rising incidence of thyroid cancer using the surveillance, epidemiology and end results national cancer data registry. *Surgery* 2010;148:1147-1152
8. Hughes DT, Haymart MR, Miller BS, Gauger PG, Doherty GM. The most commonly occurring papillary thyroid cancer in the United States is now a microcarcinoma in a patient older than 45 years. *Thyroid* 2011;21:231-236
9. Jung KW, Park S, Kong HJ, Won YJ, Lee JY, Park EC, et al. Cancer statistics in Korea: incidence, mortality, survival, and prevalence in 2008. *Cancer Res Treat* 2011;43:1-11
10. Hedinger C, Williams ED, Sobin LH. *Histologic typing of thyroid tumors. International histologic classification of tumors*. Berlin: Springer 1988:7-68
11. Mazeh H, Chen H. Advances in surgical therapy for thyroid cancer. *Nat Rev Endocrinol* 2011;7:581-588
12. Mann B, Buhr HJ. Lymph node dissection in patients with differentiated thyroid carcinoma—who benefits? *Langenbecks Arch Surg* 1998;383:355-358
13. Roh JL, Park JY, Park CI. Total thyroidectomy plus neck dissection in differentiated papillary thyroid carcinoma patients: pattern of nodal metastasis, morbidity, recurrence, and postoperative levels of serum parathyroid hormone. *Ann Surg* 2007;245:604-610
14. Wada N, Duh QY, Sugino K, Iwasaki H, Kameyama K, Mimura T, et al. Lymph node metastasis from 259 papillary thyroid microcarcinomas: frequency, pattern of occurrence and recurrence, and optimal strategy for neck dissection. *Ann Surg* 2003;237:399-407
15. Cho BY, Choi HS, Park YJ, Lim JA, Ahn HY, Lee EK, et al. Changes in the clinicopathological characteristics and outcomes of thyroid cancer in Korea over the past four decades. *Thyroid* 2013;23:797-804
16. Mazzaferri EL, Jhiang SM. Long-term impact of initial surgical and medical therapy on papillary and follicular thyroid cancer. *Am J Med* 1994;97:418-428
17. Su DH, Chang SH, Chang TC. The impact of locoregional recurrences and distant metastases on the survival of patients with papillary thyroid carcinoma. *Clin Endocrinol (Oxf)* 2015;82:286-294
18. Schlumberger MJ. Papillary and follicular thyroid carcinoma. *N Engl J Med* 1998;338:297-306
19. Liu W, Cheng R, Ma Y, Wang D, Su Y, Diao C, et al. Establishment and validation of the scoring system for preoperative prediction of central lymph node metastasis in papillary thyroid carcinoma. *Sci Rep* 2018;8:6962
20. Kwak JY, Kim EK, Kim MJ, Son EJ, Chung WY, Park CS, et al. Papillary microcarcinoma of the thyroid: predicting factors of lateral neck node metastasis. *Ann Surg Oncol* 2009;16:1348-1355
21. Lee SH, Lee SS, Jin SM, Kim JH, Rho YS. Predictive factors for central compartment lymph node metastasis in thyroid papillary microcarcinoma. *Laryngoscope* 2008;118:659-662
22. Suk HI, Lee SW, Shen D; Alzheimer's Disease Neuroimaging Initiative. Latent feature representation with stacked auto-encoder for AD/MCI diagnosis. *Brain Struct Funct* 2015;220:841-859
23. Zhang W, Li R, Deng H, Wang L, Lin W, Ji S, et al. Deep convolutional neural networks for multi-modality isointense infant brain image segmentation. *Neuroimage* 2015;108:214-224
24. Shin HC, Orton MR, Collins DJ, Doran SJ, Leach MO. Stacked autoencoders for unsupervised feature learning and multiple organ detection in a pilot study using 4D patient data. *IEEE Trans Pattern Anal Mach Intell* 2013;35:1930-1943
25. Choi WJ, Park JS, Kim KG, Kim SY, Koo HR, Lee YJ. Computerized analysis of calcification of thyroid nodules

- as visualized by ultrasonography. *Eur J Radiol* 2015;1;84:1949-1953
26. Li H, Weng J, Shi Y, Gu W, Mao Y, Wang Y, et al. An improved deep learning approach for detection of thyroid papillary cancer in ultrasound images. *Sci Rep* 2018;8:6600
  27. Ma J, Wu F, Zhu J, Xu D, Kong D. A pre-trained convolutional neural network based method for thyroid nodule diagnosis. *Ultrasonics* 2017;73:221-230
  28. Wu H, Deng Z, Zhang B, Liu Q, Chen J. Classifier model based on machine learning algorithms: application to differential diagnosis of suspicious thyroid nodules via sonography. *AJR Am J Roentgenol* 2016;207:859-864
  29. He K, Zhang X, Ren S, Sun J. Deep residual learning for image recognition. *Proc IEEE Comput Soc Conf Comput Vis Pattern Recognit* 2016;12:770-778
  30. Pan SJ, Yang Q. A survey on transfer learning. *IEEE Trans Knowl Data Eng* 2010;22:1345-1359
  31. Moon KW. *R statistics and graphs for medical papers*. Seoul: Hannarae Publishing Co 2015
  32. Team RC. *A language and environment for statistical computing*. Vienna: R Foundation for Statistical Computing 2016
  33. Haugen BR, Alexander EK, Bible KC, Doherty GM, Mandel SJ, Nikiforov YE, et al. 2015 American Thyroid Association Management Guidelines for adult patients with thyroid nodules and differentiated thyroid cancer: the American Thyroid Association Guidelines Task Force on thyroid nodules and differentiated thyroid cancer. *Thyroid* 2016;26:1-133
  34. Ito Y, Miyauchi A, Kihara M, Higashiyama T, Kobayashi K, Miya A. Patient age is significantly related to the progression of papillary microcarcinoma of the thyroid under observation. *Thyroid* 2014;24:27-34
  35. Ito Y, Miyauchi A, Kobayashi K, Miya A. Prognosis and growth activity depend on patient age in clinical and subclinical papillary thyroid carcinoma. *Endocr J* 2014;61:205-213
  36. Lundgren CI, Hall P, Dickman PW, Zedenius J. Clinically significant prognostic factors for differentiated thyroid carcinoma: a population-based, nested case-control study. *Cancer* 2006;106:524-531
  37. Kim SY, Kwak JY, Kim EK, Yoon JH, Moon HJ. Association of preoperative US features and recurrence in patients with classic papillary thyroid carcinoma. *Radiology* 2015;277:574-583
  38. Jeong EY, Kim HL, Ha EJ, Park SY, Cho YJ, Han M. Computer-aided diagnosis system for thyroid nodules on ultrasonography: diagnostic performance and reproducibility based on the experience level of operators. *Eur Radiol* 2019;29:1978-1985
  39. Chi J, Walia E, Babyn P, Wang J, Groot G, Eramian M. Thyroid nodule classification in ultrasound images by fine-tuning deep convolutional neural network. *J Digit Imaging* 2017;30:477-486
  40. Kim SY, Lee E, Nam SJ, Kim EK, Moon HJ, Yoon JH, et al. Ultrasound texture analysis: association with lymph node metastasis of papillary thyroid microcarcinoma. *PLoS One* 2017;12:e0176103

## 인공지능 딥러닝을 이용한 갑상선 초음파에서의 갑상선암의 재발 예측

길지은<sup>1</sup> · 김광기<sup>2</sup> · 김영재<sup>2</sup> · 구혜령<sup>1</sup> · 박정선<sup>1\*</sup>

**목적** 수술 전 초음파 검사에서 갑상선 종양의 재발을 예측할 수 있는 심층 학습 모델을 개발하고자 한다.

**대상과 방법** 수술 전 초음파에서 병리학적으로 확진된 갑상선 수술을 받은 229명의 환자(남성:여성 = 42:187, 평균 연령, 49.6세)의 대표적인 초음파 이미지를 포함시켰다. 각각 대표적인 횡축 또는 종축 초음파 이미지가 선택되었다. 신경 네트워크용 Python 2.7.6 및 Keras 2.1.5, convolutional neural network을 사용한 심층 학습이 사용되었다. 재발한 환자와 재발이 없는 환자의 임상 및 조직학적 특징을 비교하였다. 그룹 간의 심층 학습 모델의 receiver operating characteristic curve 곡선 아래의 영역은 재발 갑상선암을 예측하기 위한 심층 학습 모델의 예측에 사용되었다.

**결과** 전체 환자 229명 중 49명이 종양 재발(21.4%)을 보였다. 종양의 크기, 다원성은 재발이 없는 군과 재발 군에서 유의한 차이가 있었다( $p < 0.05$ ). 재발성 갑상선암 예측을 위한 심층 학습 모델의 전반적인 평균 area under the curve (이하 AUC) 값은  $0.9 \pm 0.06$ 이었다. 평균 AUC는 macrocarcinoma에서  $0.87 \pm 0.03$ , microcarcinoma에서  $0.79 \pm 0.16$ 이었다.

**결론** 갑상선암의 초음파 이미지를 이용한 심층 학습 모델로 갑상선암 재발의 예측 모델 구축의 가능성을 보여주었다.

<sup>1</sup>한양대학교 의과대학 영상학과, <sup>2</sup>가천대학교 의과대학 의예과